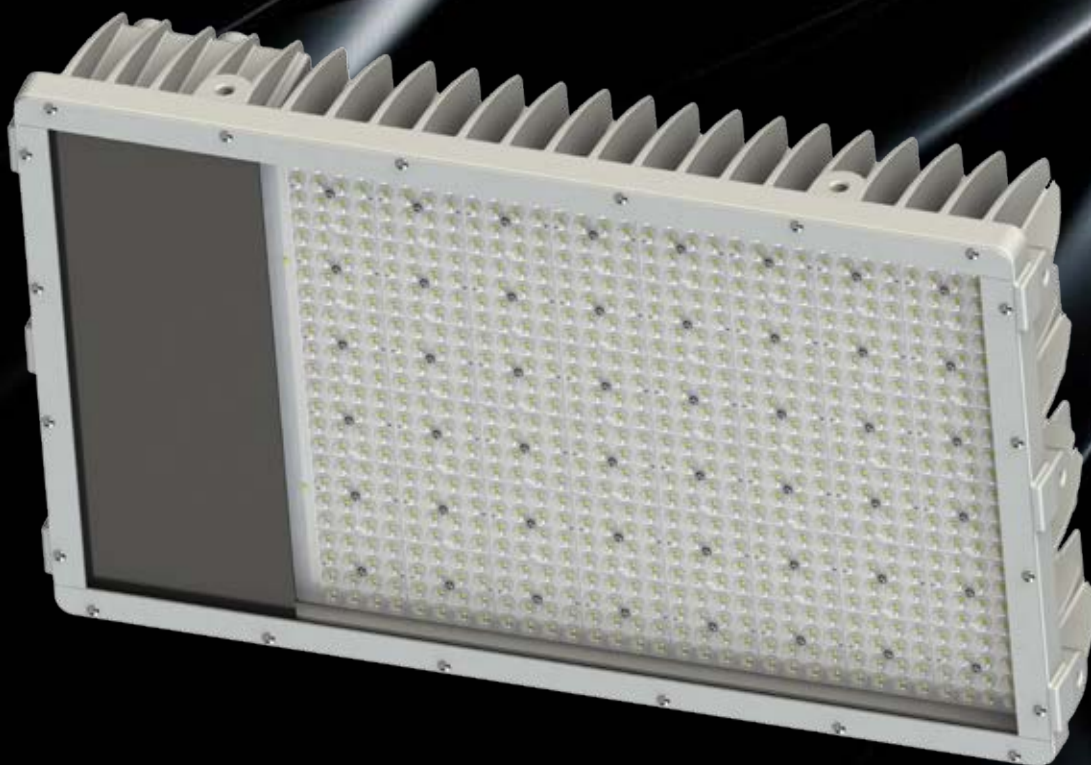
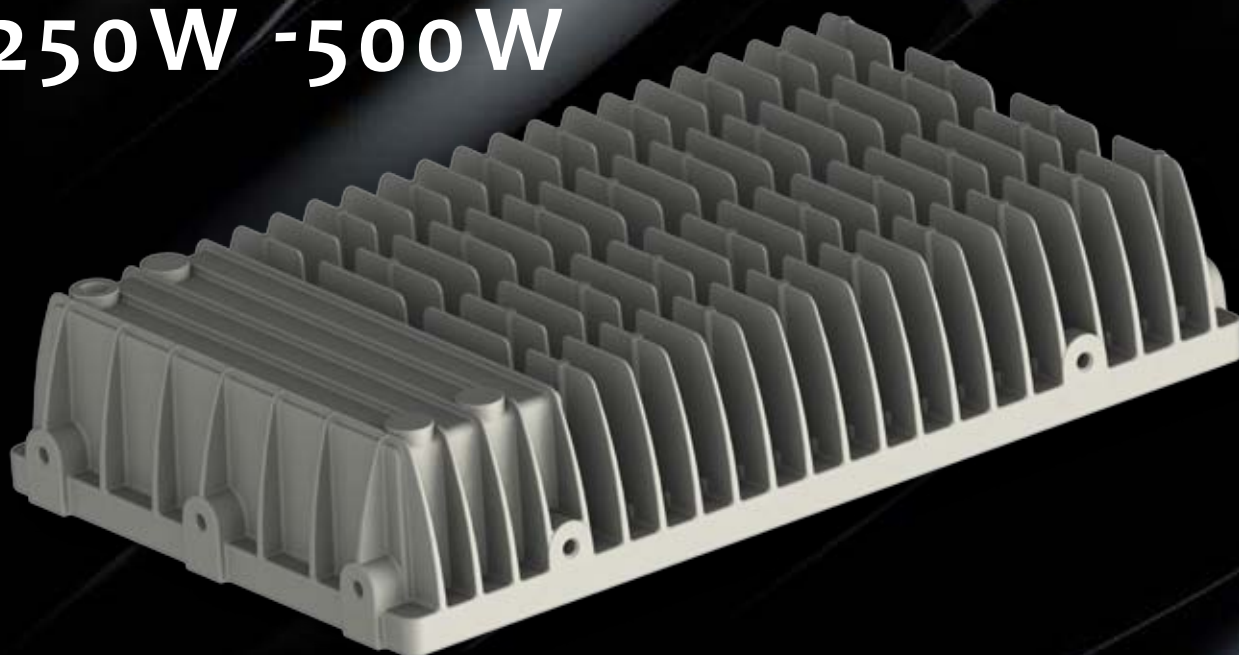




TUNNEL STADIUM AREA LED
LUMINAIRE

SL 600

250W - 500W



WWW.BSM-BG.COM

LED₃₂



TUNNEL STADIUM AREA

LED

LUMINAIRE

SL 600



LG Innotek

	Stadium, areas	Stadium, areas	Tunnel
LED number	224 LED	224 LED	160 LED
Power	250W	500W	500W
Luminous flux	31000 Lm	58000 Lm	55000 Lm
Light efficiency	125 Lm/W	116 Lm/W	110 Lm/W
LED current	0.350 A	0.700 A	1.00A

(The flux and efficiency may vary +/- 20%, depending on the LEDs)

Specifications are subject to change without notice, for latest datasheet refer to web-site



	770 LED	770 LED	770 LED	770 LED
LED number	770 LED	770 LED	770 LED	770 LED
Power	250 W	330W	400W	500W
Luminous flux	38000 Lm	47000 Lm	55000 Lm	67000 Lm
Light efficiency	150 Lm/W	142 Lm/W	138 Lm/W	134 Lm/W
LED current	0.050 A	0.070 A	0.083 A	0.100 A

(The flux and efficiency may vary +/- 20%, depending on the LEDs)

Specifications are subject to change without notice, for latest datasheet refer to web-site



LEDiL

TRIDONIC



WWW.BSM-BG.COM

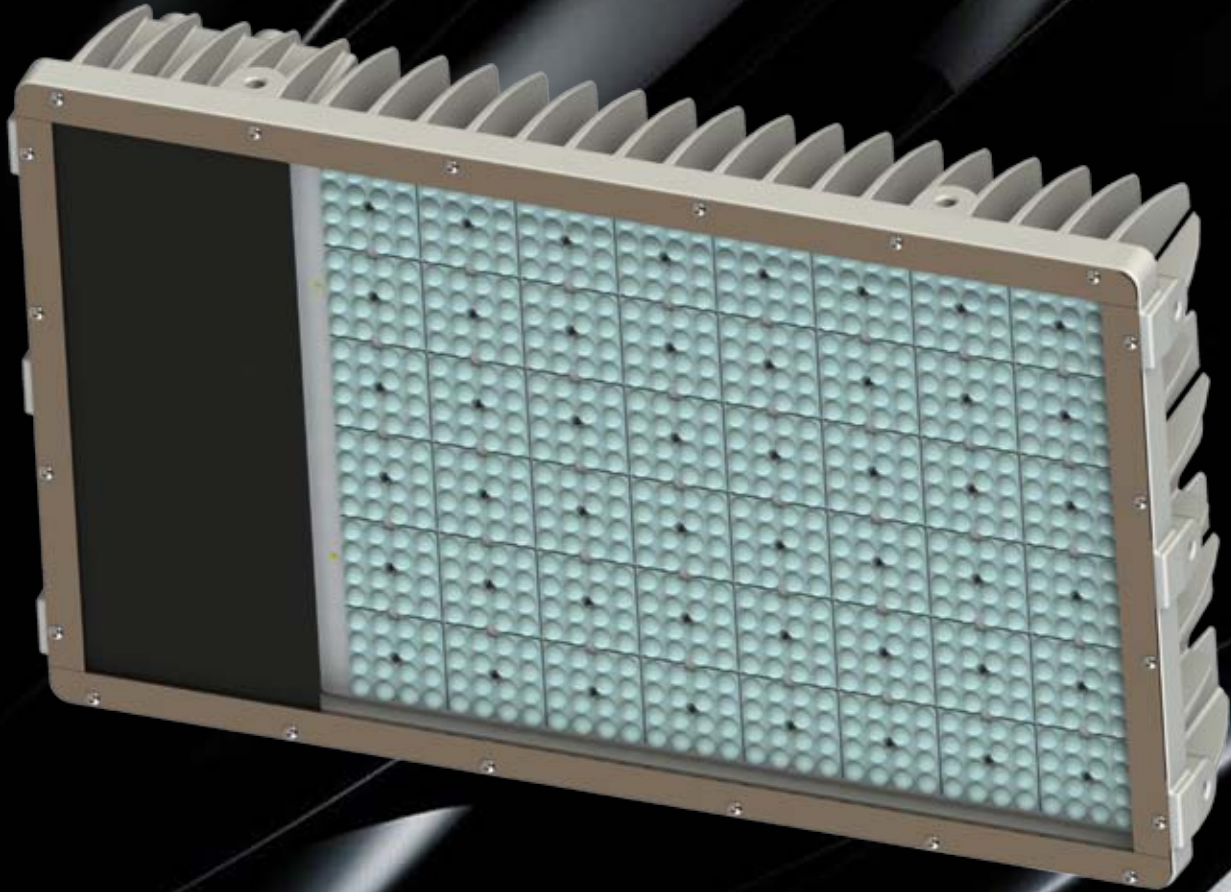
LED 33



TUNNEL STADIUM AREA LUMINAIRE

LED

SL 600



LED brand	CREE XT-E, XPG-3; LG XA, XB; NICHIA - 757
Lenses / Optics	LEDiL, LEDLINK
Power supply	AC 220-240V (100-240V on request)
LED driver	TRIDONIC, PHILIPS, MEANWELL, BSM
Operation temperature	-30°C + 45°C (-40°C on request)
Insulation class	Class I; Class II on request
Beam Angle	High beam, on request 60°, 90°, 120°, asymmetric
Power factor	≥0.92
Operation Lifetime	≥ 50,000 h
On-load switch	On request
Surge protection	6KV, 10KV (on request)
CR Index	CRI Ra≥65 (CRI Ra≥80 on request)
Color temperature	4000K - 6000K +/- 300K (3000K, 6500K on request)

(Luminosity parameters may vary on request)

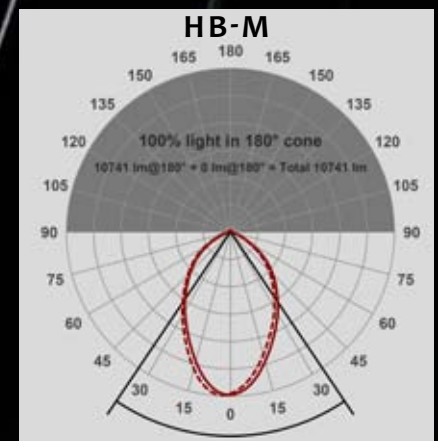
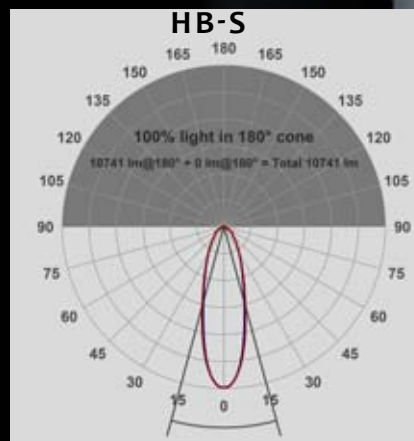
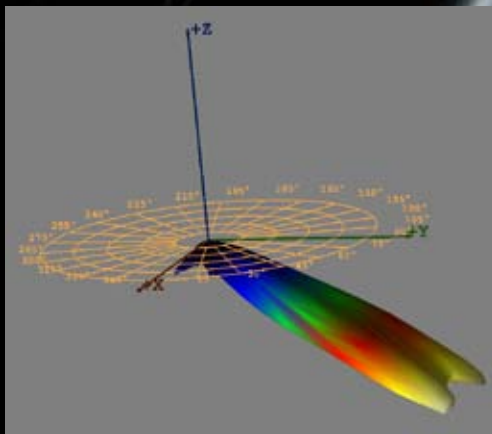
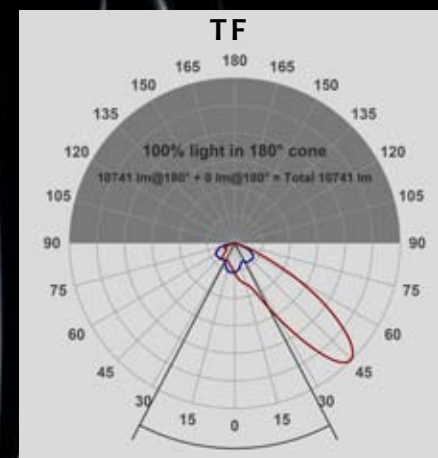
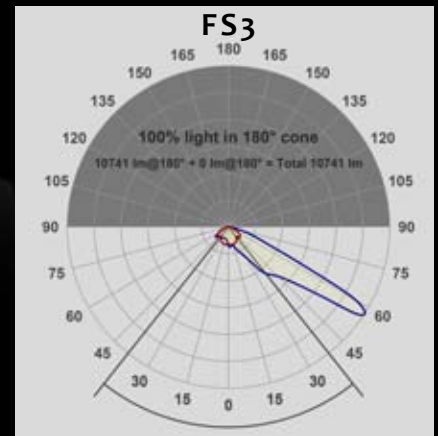
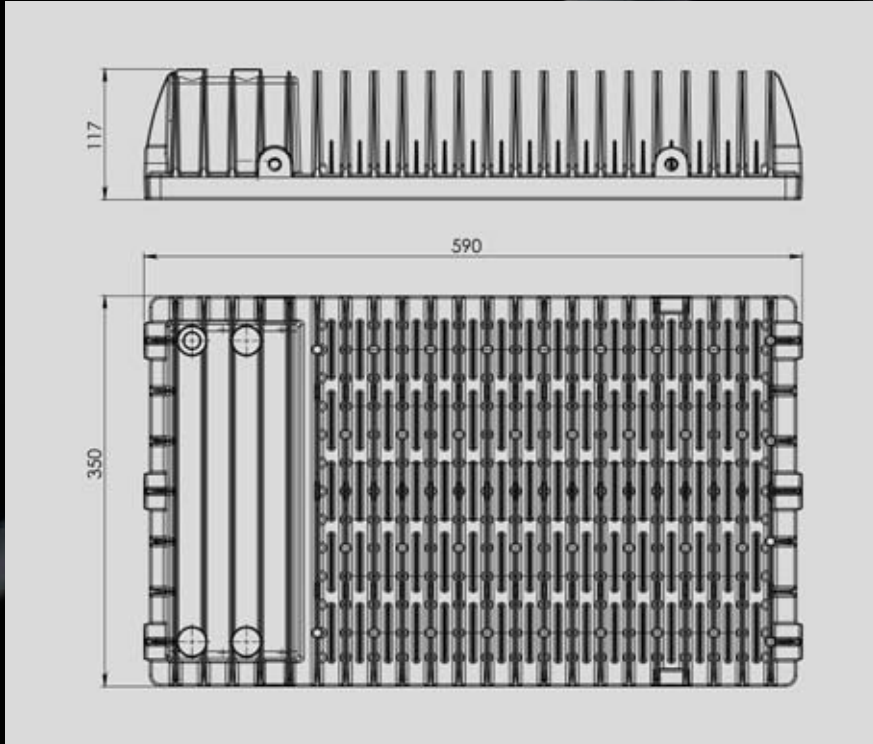




TUNNEL STADIUM AREA LUMINAIRE

LED

SL 600



Body color	RAL7035 standard - custom color possible on request RAL9006, RAL7024
Body / Screen	Aluminium die casting, tempered glass
IP / IK grade	IP67 / IK07- IK10
Weight	20 kg
Dimensions	590x350x117mm
Mounting bracket	0°-90° (on request)
Warranty	3 years (5 years on request)
Main standards references	CE, EN 55015; EN 61000; EN 61547; EN 62031 EN 60598; EN 60529; EN 62262; EN 13201; IEC 62471



WWW.BSM-BG.COM

LED₃₅